

TIRE & LUBE EXPRESS

TIRE LUBE
SPACE SPARE

36" Letters

12" Letters

TIRE & LUBE EXPRESS

TIRES

ALIGNMENT

OIL CHANGE

OIL CHANGE

GARDEN CENTER

30" TIRE & LUBE EXPRESS ON RIGHT

STOREFRONT

STOREFRONT

30" TIRE & LUBE EXPRESS

TIRE & LUBE EXPRESS

30"

30"

30"

30"

30"

30"

STORE REMODEL

STORE #1416

INDEX OF DRAWINGS

GENERAL
C1 COVER SHEET AND DETAILS

ARCHITECTURAL
A1 FLOOR PLAN, NOTES
A2 ENLARGED PLANS
A3 MISC. DETAILS AND PAINT SCHEDULE
A4 GARDEN CENTER PLAN AND DETAILS
SB1 SNACKBAR PLANS

MECHANICAL
M1 PLUMBING PLANS
E1 POWER PLAN



HARRISON FRENCH
ARCHITECTURE
502 S.W. A Street
Bentonville, Arkansas 72712
Telephone 501/273-7780

THE PLANS SHOWN THROUGHOUT THESE DOCUMENTS ARE BASED ON LIMITED INFORMATION PROVIDED BY WAL-MART. THE ARCHITECT HAS NOT SURVEYED THIS STORE AND CANNOT BE HELD RESPONSIBLE FOR THE ACCURACY OF THE EXISTING CONDITIONS ILLUSTRATED. ALL SUBCONTRACTORS ARE TO INSPECT THE STORE PRIOR TO COMMENCING WITH ANY WORK AND NOTIFY THE WAL-MART CONSTRUCTION MANAGER OF ANY DISCREPANCIES BETWEEN THESE PLANS AND THE EXISTING CONDITIONS.

EACH SUBCONTRACTOR IS RESPONSIBLE FOR HAVING A THOROUGH KNOWLEDGE OF ALL DRAWINGS AND SPECIFICATIONS IN THEIR RELATED FIELD. THE FAILURE TO ACQUAINT HIMSELF WITH THIS KNOWLEDGE DOES NOT RELIEVE HIM OF ANY RESPONSIBILITY FOR PERFORMING HIS WORK PROPERLY. NO ADDITIONAL COMPENSATION SHALL BE ALLOWED BECAUSE OF CONDITIONS THAT OCCUR DUE TO FAILURE TO FAMILIARIZE WORKERS WITH THIS KNOWLEDGE.

GENERAL NOTES

1. THE STANDARD WAL-MART PROTOTYPE SPECIFICATIONS FOR REMODEL PROJECTS ARE A PART OF THESE CONSTRUCTION DOCUMENTS AND MUST BE REFERRED TO FOR COMPLETE DOCUMENTATION. REFER TO THE SPECIFICATIONS FOR ADDITIONAL SCOPE OF WORK AND DETAILS NOT INCLUDED ON THESE DRAWINGS.
2. ALL MINOR EXTERIOR WALL REPAIRS ARE INCLUDED IN THIS SCOPE OF WORK. VERIFY AREAS IN NEED OF REPAIR WITH THE WAL-MART CONSTRUCTION MANAGER. AREAS SPECIFICALLY CALLED OUT ON THE PLANS MAY NOT BE THE ONLY AREAS IN NEED OF REPAIR. PERFORM REPAIRS PRIOR TO PRIMING AND REPAINTING. IF WALL REPAIR WORK IS IN QUESTION, CONTACT THE WAL-MART CONSTRUCTION MANAGER FOR HIS DIRECTIVE.
3. REFER TO WAL-MART MAINTENANCE SCOPE OF WORK FOR OTHER REPAIRS NOT INCLUDED IN THIS SCOPE OF WORK. REPAIRS TO THE EXISTING ROOF SYSTEM INCLUDING ROOF/WALL FLASHING AND ROOF REPAIRS ARE NOT INCLUDED IN THIS SCOPE OF WORK.
4. THE REPAIR AND REPLACEMENT OF ANY DAMAGED DOWNSPOUTS WILL BE BY WAL-MART MAINTENANCE.
5. VERIFY WITH WAL-MART CONSTRUCTION MANAGER MISCELLANEOUS ELECTRICAL ITEMS WHICH REQUIRE WORK. ELECTRICAL ITEMS COULD INCLUDE BUT MAY NOT BE LIMITED TO INSTALLING, REPAIRING, OR REPLACING THE FOLLOWING ITEMS: LIGHTING (INTERIOR AND EXTERIOR), CEILING FANS, EXHAUST FANS, ELECTRIC WATER COOLERS, ETC.

PARKING LOT NOTES

1. ALL PAVEMENT MARKINGS ARE TO CONFORM TO THE REQUIREMENTS OF THE MANUAL ON UNIFORM TRAFFIC CONTROL DEVICES, CURRENT EDITION. ALL SYMBOLS/SIGNAGE FOR ACCESSIBILITY ARE TO COMPLY WITH THE STATE ACCESSIBILITY CODE AND/OR THE A.D.A.A.C.
2. SEAL EXISTING CONCRETE PAVEMENT JOINTS AS DIRECTED IN THE FIELD BY THE WALMART CONSTRUCTION MANAGER.
3. FOR ASPHALTIC CONCRETE PAVEMENT, DAMAGED AREAS IN NEED OF REPAIR ARE TO BE IDENTIFIED IN THE FIELD BY THE WAL-MART CONSTRUCTION MANAGER. REPAIR WORK WILL BE AS DIRECTED BY THE WAL-MART CONSTRUCTION MANAGER.

GARDEN CENTER NOTES

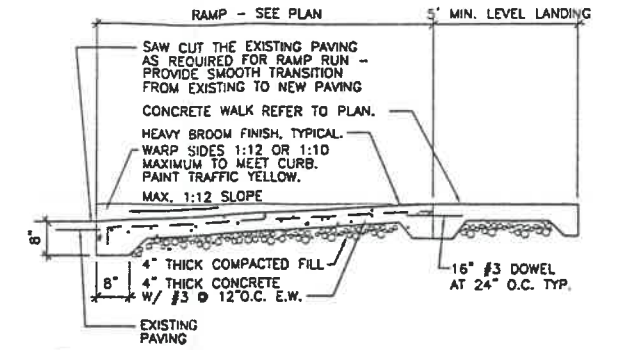
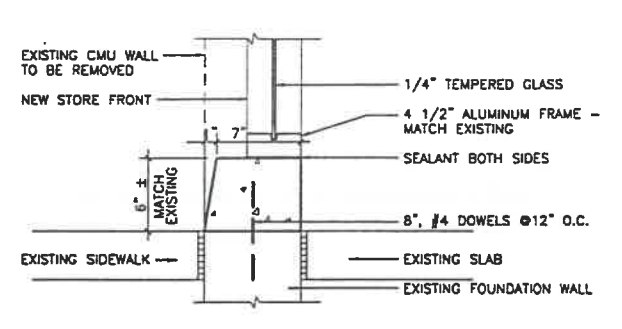
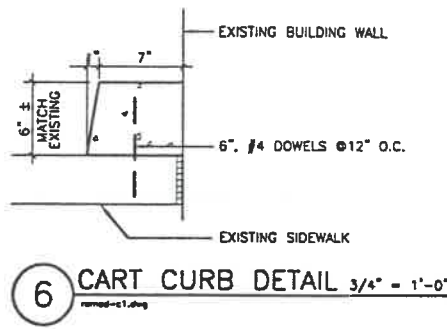
1. SHADE CLOTH FABRIC, ALUMINUM TRUSSES, TRUSS BRIDGING, BRIDGING CONNECTORS, BOLTS, AND NYLON CORD WILL BE PROVIDED BY CONTRACTOR. THE CONTRACTOR IS TO INSTALL THESE ITEMS. THE CONTRACTOR WILL BE RESPONSIBLE FOR ALL COSTS ARISING WHEN ANY REPLACEMENT MATERIALS MUST BE RESHIPED DUE TO LOSS OR DAMAGE AT THE JOB SITE AFTER ACCEPTANCE OF THE ORIGINAL SHIPMENT.
2. GARDEN CENTER GATES ARE TO HAVE SIGNAGE INSTALLED, WHICH READS "GATE TO BE KEPT OPEN DURING BUSINESS HOURS".
3. THE CONTRACTOR IS TO FIELD MODIFY ALL THE 1 INCH ALUMINUM TRUSSES AS REQUIRED TO COORDINATE WITH THE GARDEN CENTER LAYOUT.
4. THE SHADE CLOTH FABRIC HAS A FLAME SPREAD CLASSIFICATION OF 1, (0-25 FLAME SPREAD INDEX).

Sheet Contents:
COVER SHEET AND DETAILS

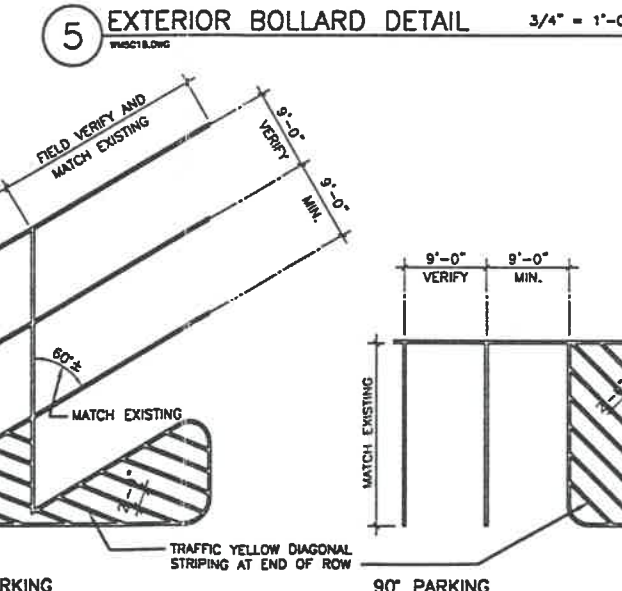
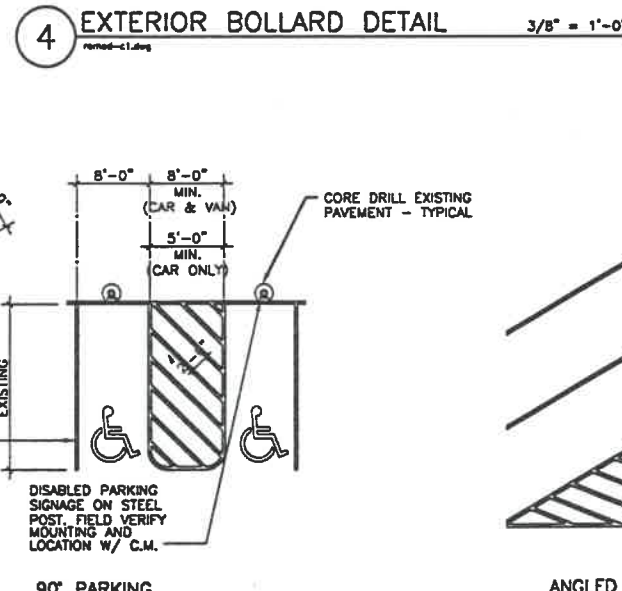
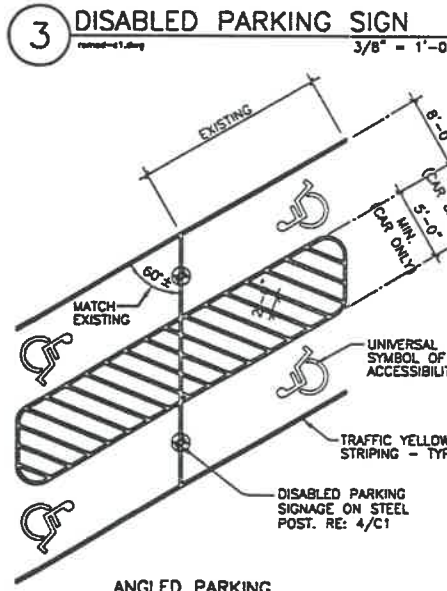
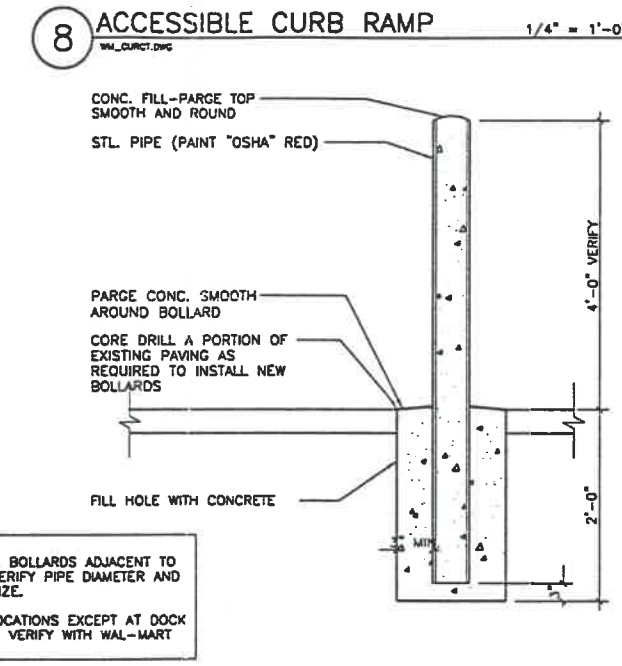
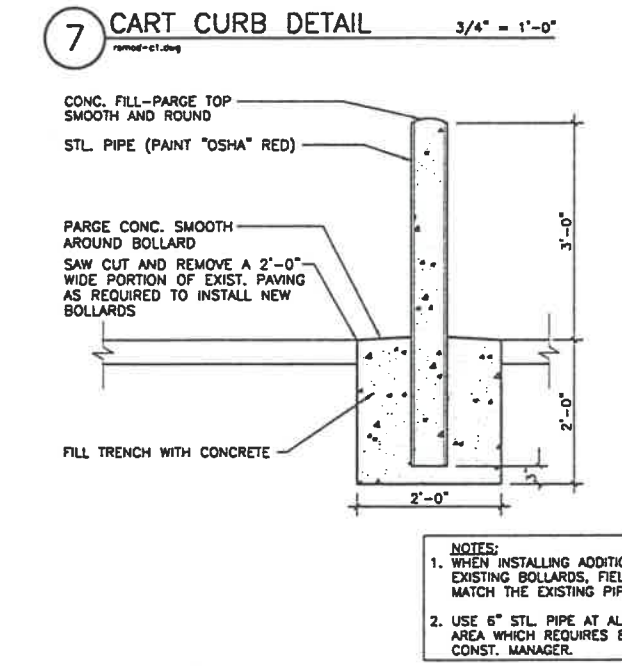
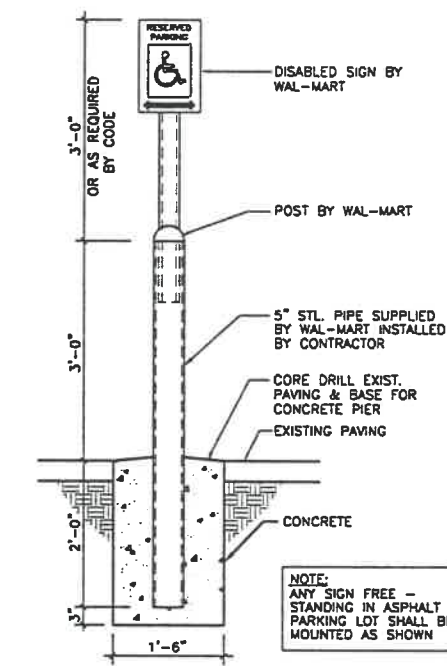
Drawn: NKA
Checked By: HOF
Revisions:
A 05-08-97 ADDENDUM #1

Project Number: W7048
Date: 03-06-97
Sheet: 1 OF 1 SHEETS

C1



NOTE:
THIS SHEET AND SHEET A3 HAVE BEEN DEVELOPED AS PROTOTYPE SHEETS FOR GENERAL REMODEL PROJECTS - NOT ALL OF THE DETAILS ON THESE SHEETS MAY BE APPLICABLE FOR THIS SPECIFIC JOB - VERIFY AND COORDINATE AS REQUIRED



1851 Oakwood Ste. 601

NOTES:
1. VERIFY TYPE AND LOCATION OF NEW PARKING STALLS ON SITE WITH WAL-MART CONSTRUCTION MANAGER.
2. ALL STRIPING SHALL BE 6" WIDE UNLESS NOTED OTHERWISE. PAVEMENT MARKING PAINT PER SPECS.

NOTES:
1. VERIFY TYPE AND LOCATION OF NEW PARKING STALLS ON SITE WITH WAL-MART CONSTRUCTION MANAGER.
2. ALL STRIPING SHALL BE 6" WIDE UNLESS NOTED OTHERWISE. PAVEMENT MARKING PAINT PER SPECS.

NOTES:
1. VERIFY TYPE AND LOCATION OF NEW PARKING STALLS ON SITE WITH WAL-MART CONSTRUCTION MANAGER.
2. ALL STRIPING SHALL BE 6" WIDE UNLESS NOTED OTHERWISE. PAVEMENT MARKING PAINT PER SPECS.

1 DISABLED PARKING N.T.S.

2 TYPICAL PARKING STRIPING N.T.S.

2 TYPICAL PARKING STRIPING N.T.S.



Harrison French
5-20-97

HARRISON FRENCH
ARCHITECTURE
502 S.W. A Street
Bentonville, Arkansas 72712
Telephone 501/273-7780

WAL-MART
STORE REMODEL

STORE #1416
NAPOLEON,
OHIO

68,907 SQ. FT.

WAL-MART STORES INC.
STORE PLANNING DEPT. 8085
702 SW 8TH
BENTONVILLE, AR 72716

Sheet Contents:

FLOOR PLAN
AND NOTES

Drawer: NKA
Checked By: TWP
Revisions:

1 05-08-97 ADDENDUM #1

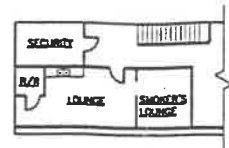
ALL QUESTIONS FROM GENERAL CONTRACTORS
RELATED TO THE SCOPE OF THIS PROJECT
OR THE WORK INCLUDED SHALL BE DIRECTED TO:

WAL-MART STORES INC.
STORE PLANNING DEPT. 8085
702 SW 8TH
BENTONVILLE, AR 72716
TELEPHONE (501) 273-4800/277-2416

Project Number: W7048
Date: 03-06-97
Sheet: 1 OF 3 SHEETS

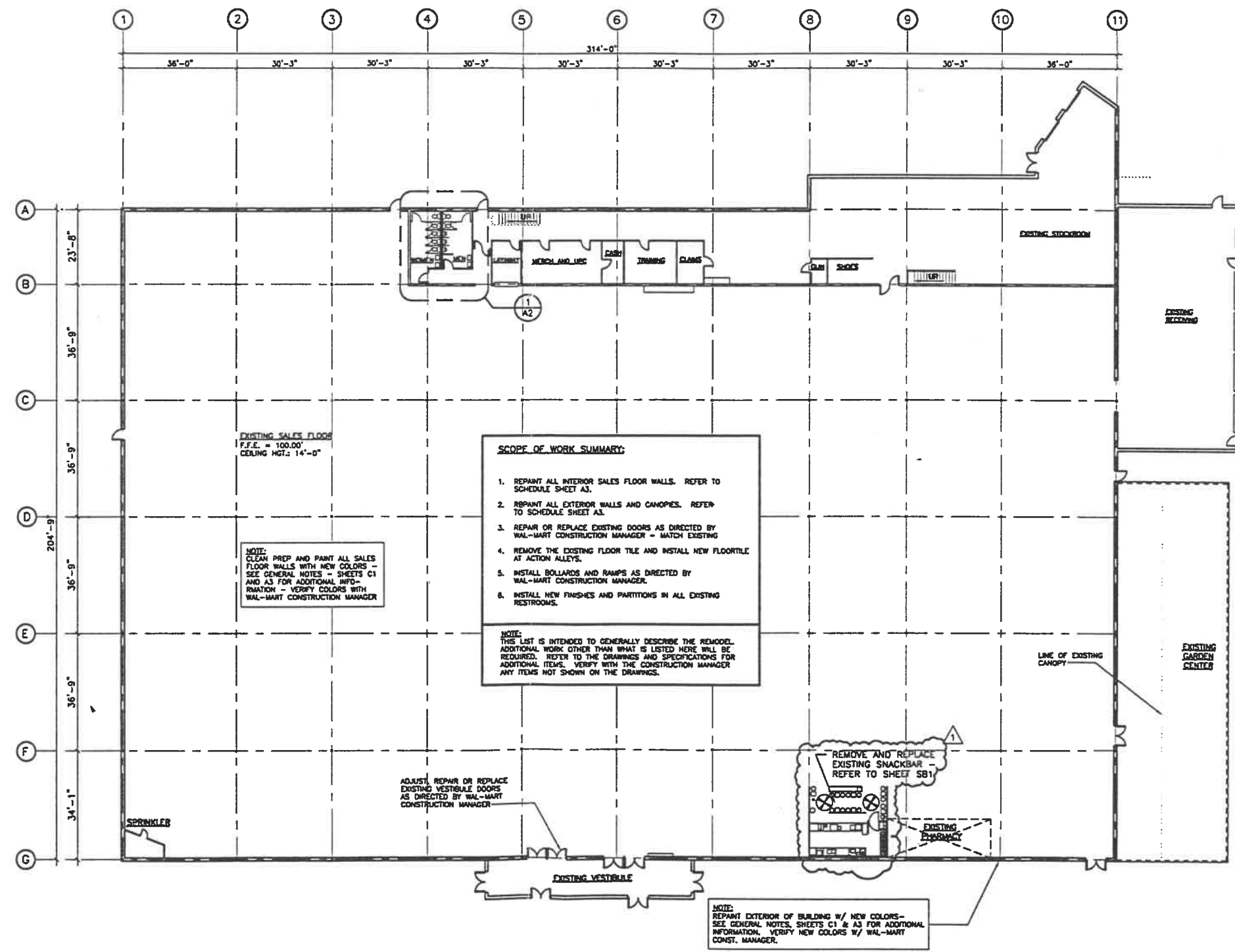
A1

Copy 1 ght ©



NOTE:
NO WORK THIS AREA - THIS PLAN
SHOWN FOR REFERENCE ONLY

2 MEZZANINE PLAN 1/40" = 1'-0"

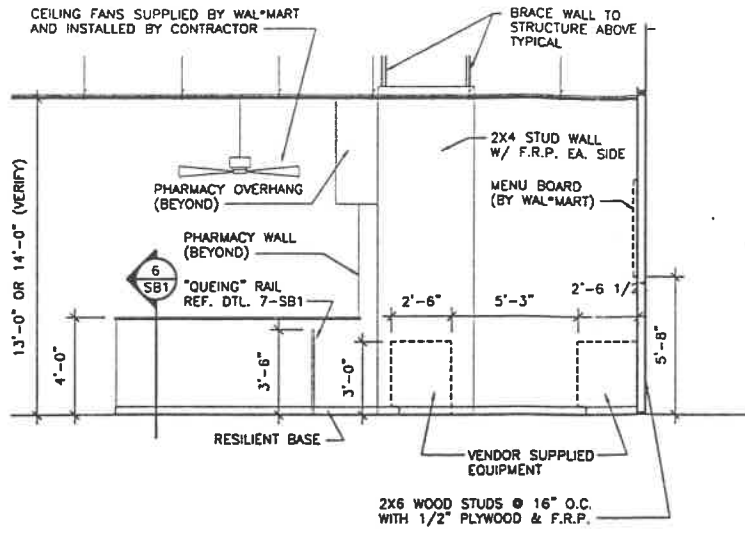


1 FLOOR PLAN 1/40" = 1'-0"

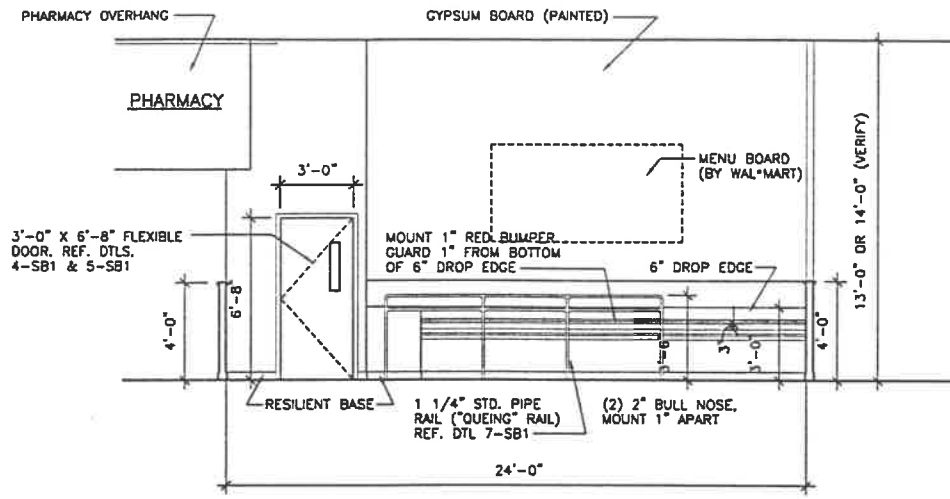
1/40" = 1'-0"

GENERAL REQUIREMENTS:

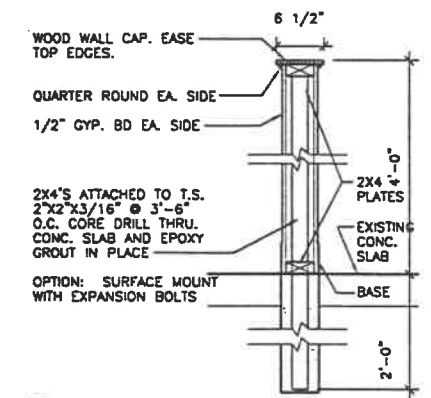
- ALL WORK SHALL BE DONE IN A SAFE AND WORKMANLIKE MANNER AND IN STRICT ACCORDANCE WITH THE ADOPTED BUILDING CODE, NATIONAL ELECTRIC CODE (LATEST EDITION), AND ALL APPLICABLE REGULATIONS AND ORDINANCES HAVING JURISDICTION.
- THE EXISTING BUILDING SHALL BE PROTECTED FROM MOISTURE, DUST, AND DEBRIS. INSTALL PARTITIONS AS REQUIRED TO PROHIBIT DUST FROM ENTERING THE SALES AREA DURING DEMOLITION.
- ANY DAMAGE TO WAL*MART'S PROPERTY CAUSED BY THE CONSTRUCTION PROCESS SHALL BE REPAIRED/REPLACED AT NO ADDITIONAL COST TO WAL*MART. THIS INCLUDES ALL MERCHANDISE. THE CONTRACTOR SHALL PAY WAL*MART THE RETAIL COST OF ALL DAMAGED MERCHANDISE.
- THE CONTRACTOR SHALL KEEP THE CONSTRUCTION AREA CLEAN AND FREE OF DEBRIS AND SHALL REMOVE TRASH AND DEBRIS FROM THE CONSTRUCTION AREA DAILY. NO FLAMMABLE LIQUIDS OR MATERIALS MAY BE STORED IN THE EXISTING BUILDING. DURING CONSTRUCTION TWO UL LISTED 2A:20BC DRY CHEMICAL FIRE EXTINGUISHERS SHALL BE ACCESSIBLE AT ALL TIMES WITHIN THE CONSTRUCTION AREA.
- REMOVE ANY EXISTING ITEMS, SERVICES, FINISHES/OR SURFACES AS REQUIRED FOR THE INSTALLATION OF NEW CONSTRUCTION. PROVIDE FURRING AROUND CONDUITS AND PIPING SHOWN OR NOT SHOWN AND FINISH OUT FURRING TO MATCH EXISTING ADJACENT SURFACES.
- REPAIR, REROUTE AND EXTEND ALL SERVICES, PIPING, CONDUITS OF EXISTING ITEMS AND EQUIPMENT AS REQUIRED DURING THE CONSTRUCTION PROCESS FOR THE COMPLETE INSTALLATION AND OPERATION OF NEW EQUIPMENT. THIS INCLUDES ALL ITEMS SHOWN OR NOT SHOWN ON THE DRAWINGS. RESET EXISTING EQUIPMENT OR RELATED ITEMS AS REQUIRED FOR PROPER OPERATION.
- WHERE EXISTING SURFACES ARE TO REMAIN, REPAIR AND PATCH AS NECESSARY TO BLEND INTO WORK.
- FURNISH AND INSTALL ALL MATERIALS FOR A COMPLETE INSTALLATION READY FOR INTENDED USE. ALL INSTALLATIONS SHALL BE IN ACCORDANCE WITH MANUFACTURER'S RECOMMENDATIONS AND INSTRUCTIONS.
- ORGANIZE ALL WORK TO KEEP DISRUPTIONS TO THE STORE OPERATIONS AT A MINIMUM. COORDINATE UTILITY DISRUPTIONS WITH THE WAL*MART STORE MANAGER.



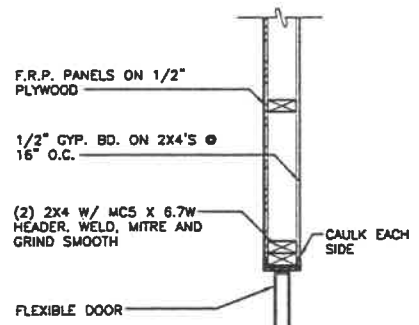
3 SECTION
24ASB1-R.DWG 1/4" = 1'-0"



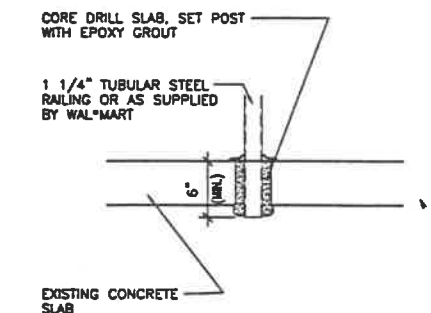
2 ELEVATION
24ASB1-R.DWG 1/4" = 1'-0"



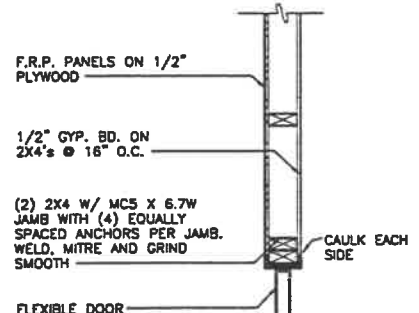
6 WALL SECTION
24ASB1-R.DWG 1" = 1'-0"



4 HEAD
24ASB1-R.DWG 1" = 1'-0"



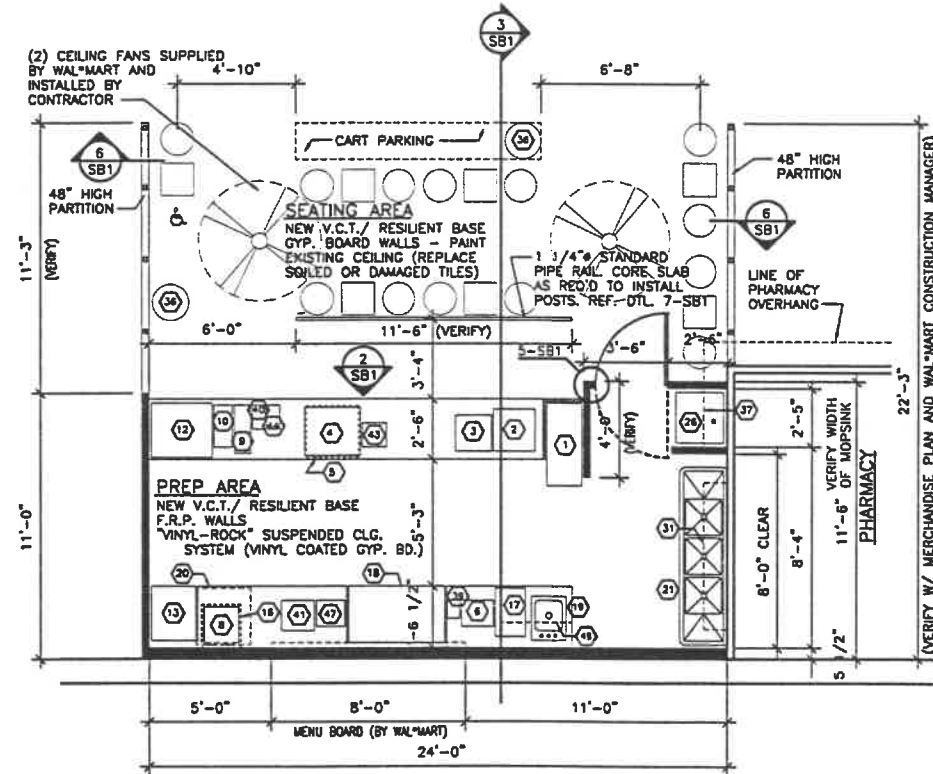
7 QUEING RAIL
24ASB1-R.DWG 3/4" = 1'-0"



5 JAMB
24ASB1-R.DWG 1" = 1'-0"

EQUIPMENT LIST

- 1 ICEE MACHINE
- 2 POPCORN MACHINE
- 3 CASH REGISTER
- 4 HOT DOG GRILL/SHIELD
- 5 HOT DOG BUN WARMER
- 6 NACHO CHIP WARMER
- 7 CONVECTION COOKIE OVEN
- 8 COFFEE DISPENSER (REGULAR)
- 9 ICED TEA DISPENSER
- 10 BEV/ICE DISPENSER (LEVER)
- 11 ICE MACHINE W/ BIN B500
- 12 MICROWAVE OVEN
- 13 FOOD WARMER W/ DRAIN
- 14 SANDWICH PREP. REFRIGERATOR 48"
- 15 HAND SINK
- 16 UNDERCOUNTER FREEZER
- 17 3-COMPARTMENT SINK
- 18 MOP SINK
- 19 CABINETS (ABOVE)
- 20 TRASH RECEPTACLE
- 21 CLEANING SUPPLY CABINET (ABOVE)
- 22 TOASTER
- 23 CAPPUCCINO MAKER
- 24 FRY GUY FRYER
- 25 COOKIE DISPLAY
- 26 COFFEE CONDIMENTS
- 27 GRILL
- 28 WIRE SHELVING



- NOTES:**
- ALL WALLS SHOWN SHALL EXTEND TO FINISH CEILING ABOVE. (ASSUMED TO BE 13'-0" OR 14'-0" A.F.F.) BRACE WALLS LATERALLY TO STRUCTURE ABOVE AS REQUIRED @ 4'-0" O.C. - TYPICAL
 - ALL WALLS SHALL BE 2X4 STUDS @ 16" O.C. (OR 2X6 AS NOTED)
 - VENDOR SHALL SUPPLY ALL EQUIPMENT NOTED ON EQUIPMENT LIST (EXCEPT #26 MOP SINK), COUNTERS, BULLNOSE, BUMPER GUARDS, SEATS AND FIXTURES.

1 FLOOR AND EQUIPMENT PLAN
24ASB1-R.DWG 1/4" = 1'-0"



HARRISON FRENCH
ARCHITECTURE
502 S.W. A Street
Bentonville, Arkansas 72712
Telephone 501/273-7780

WAL*MART
SNACKBAR

STORE #1416
NAPOLEON,
OHIO

68,907 SQ_FT

WAL*MART STORES INC.
STORE PLANNING DEPT. 8085
702 SW 8TH
BENTONVILLE, AR 72716

Sheet Contents:

ENLARGED PLANS
AND DETAILS

Drawn: KPD
Checked By: TWP
Revisions:

1 05-08-97 ADDENDUM #1

ALL QUESTIONS FROM GENERAL CONTRACTORS
RELATED TO THE BIDDING OF THIS PROJECT
OR THE WORK INVOLVED SHALL BE DIRECTED
TO:

WAL*MART STORES INC.
STORE PLANNING DEPT. 8085
702 SW 8TH
BENTONVILLE, AR 72716
TELEPHONE: (501) 273-4028/727-2416

Project Number: W7048
Date: 05-08-97
Sheet: 1 OF 1 SHEETS

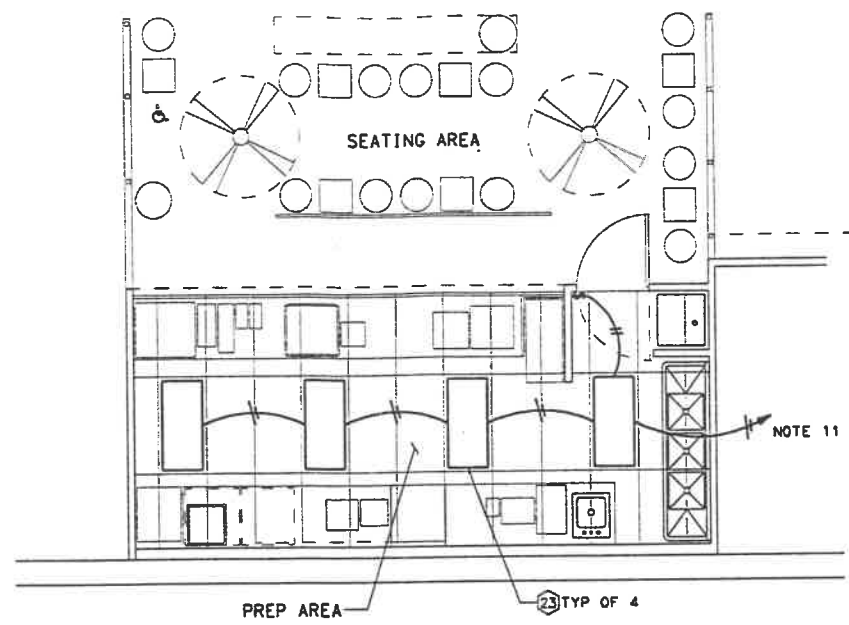


ELECTRICAL SYMBOLS	
	FLUORESCENT FIXTURE
	EXIT FIXTURE (WALL MOUNTED/CEILING MOUNTED)
	EMERGENCY FIXTURE (WALL MOUNTED/CEILING MOUNTED)
	SWITCH, SINGLE POLE
	SWITCH, 3-WAY
	SWITCH, VARIABLE SPEED
	RECEPTACLE, DUPLEX
	RECEPTACLE, SINGLE TWIST LOCK, ISOLATED GROUND
	JUNCTION BOX (WALL MOUNTED/CEILING MOUNTED)
	SPEAKER OUTLET (WALL MOUNTED/CEILING MOUNTED)
	NON-FUSED DISCONNECT
	DIRECT CONNECT
	TRANSFORMER, REFER TO TRANSFORMER SCHEDULE
	PANEL, SURFACE MOUNTED
	PANEL, FLUSH MOUNTED
	CIRCUIT, CONCEALED IN WALLS OR CEILING
	CIRCUIT, CONCEALED IN SLAB FLOOR
	CIRCUIT, EXPOSED
	TELEPHONE
	MOTOR
	LIGHT FIXTURE TYPE, REFER TO FIXTURE SCHEDULE

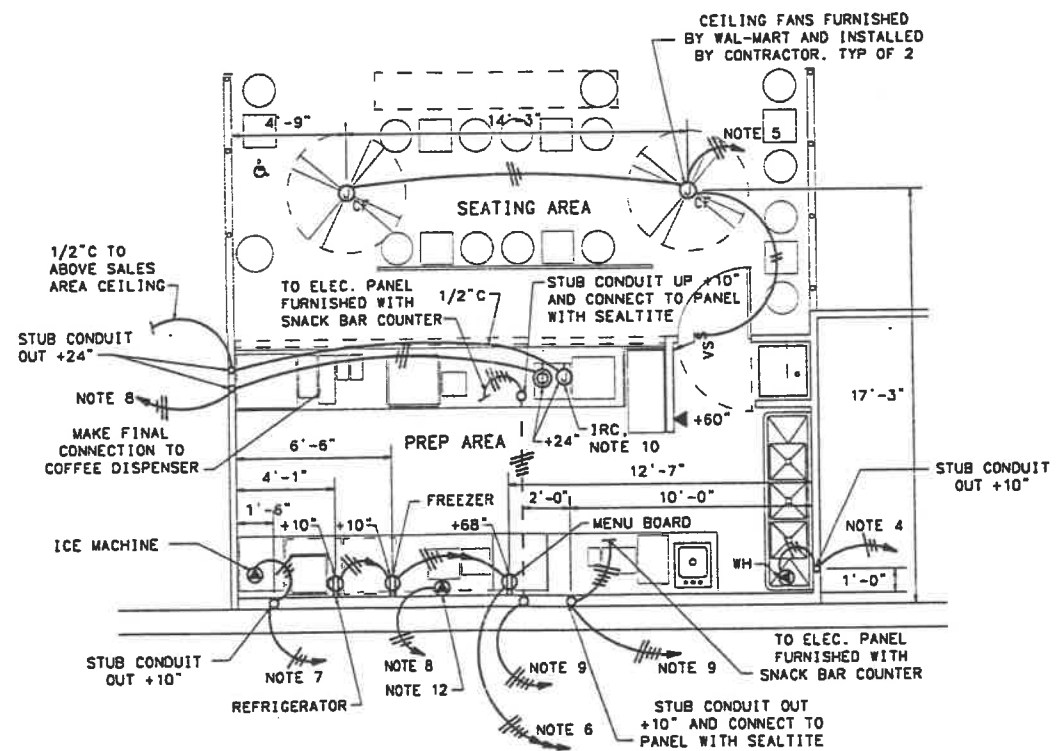
ABBREVIATIONS AND SUBSCRIPTS	
C.	CONDUIT
EF	EXHAUST FAN
EW	ELECTRIC WATER COOLER
FUT.	FUTURE
GFCI	GROUND FAULT CIRCUIT INTERRUPTER
GR.	GROUND
HD	HAND DRYER
IG	ISOLATED GROUND
IRC	INTER-REGISTER COMMUNICATION
ISP	IN-STORE PROCESSOR
LDU	LIGHTING CONTROL UNIT
N.	NEUTRAL
N.T.S.	NOT TO SCALE
TYP.	TYPICAL
SC	SECURITY CAMERA
W	WIRE
WH	WATER HEATER
WP	WEATHERPROOF
UH	UNIT HEATER

LIGHT FIXTURE SCHEDULE					
FIX. NO.	MANUFACTURER	CATALOG NUMBER	VOLTS	LAMPS	FIXTURE DESCRIPTION AND NOTES
23	DAY-BRITE/BENJAMIN LETHONIA METALUX	2TG440-010-277 WT2SPG-440-A12-277-PAF 205-440-277	277	(4) F40CW/SS	RECESSED 2' X 4' TROFFER a,b,c,d

- ALL FLUORESCENT LAMPS SHALL BE GENERAL ELECTRIC "WATT WISER", SYLVANIA "SUPERSAVER" OR PHILLIPS "ECONOWATT". COLOR: COOL WHITE.
- ALL FLUORESCENT FIXTURES SHALL BE FURNISHED WITH ENERGY SAVING BALLASTS.
- THERE SHALL BE NO SUBSTITUTIONS FOR DESIGNATED FIXTURE TYPES. FIXTURES SHALL BE SUBMITTED EXACTLY AS SPECIFIED ON SCHEDULE.
- PROVIDE NEW LAMPS FROM ALL NEW FIXTURES LISTED ON THIS SCHEDULE. LAMPS FROM EXISTING FIXTURES SHALL NOT BE REUSED IN NEW FIXTURES.



A SNACKBAR LIGHTING PLAN
SCALE: 1/4" = 1'-0" 11.4.2



B SNACKBAR POWER PLAN
SCALE: 1/4" = 1'-0" 11.4.2

EACH SUBCONTRACTOR IS RESPONSIBLE FOR HAVING A THOROUGH KNOWLEDGE OF ALL DRAWINGS AND SPECIFICATIONS IN THEIR RELATED FIELD. THE FAILURE TO ACQUAINT HIMSELF WITH THIS KNOWLEDGE DOES NOT RELIEVE THE RESPONSIBILITY OF PERFORMING HIS WORK PROPERLY. NO ADDITIONAL COMPENSATION SHALL BE ALLOWED BECAUSE OF CONDITIONS THAT OCCUR DUE TO FAILURE TO FAMILIARIZE WORKERS WITH THIS KNOWLEDGE.

- ELECTRICAL NOTES
- A. FURNISH AND INSTALL ALL MATERIALS FOR A COMPLETE INSTALLATION IN ALL RESPECTS READY FOR INTENDED USE AND IN STRICT ACCORDANCE WITH STATE AND LOCAL CODES AND MANUFACTURERS' RECOMMENDATIONS.
 - B. Coordinate with existing and new construction.
 - C. Arrange all work to keep disruptions to store operation to a minimum. Coordinate any disruptions with Wal-Mart Construction Manager.
 - NEW CIRCUITS: NO CIRCUITRY WILL BE ALLOWED TO BE ROUTED ACROSS THE ROOF OR THE EXTERIOR SIDE OF THE EXTERIOR WALLS.
 - EXISTING CIRCUITS: WHERE DEMOLITION OR NEW CONSTRUCTION INTERRUPTS EXISTING ELECTRICAL CIRCUITS FEEDING EXISTING EQUIPMENT, DEVICES, OR LIGHTING TO REMAIN BUT NOT SHOWN ON DRAWINGS, PROVIDE LABOR AND MATERIALS TO REWORK CIRCUITRY AS REQUIRED TO MAINTAIN OPERATION.
 - WATER HEATER: FURNISH AND INSTALL A 208 VOLT, 30 AMP, 1 PHASE CIRCUIT WITH THREE #10W IN 1/2" CONDUIT TO FEED NEW WATER HEATER.
 - 120 VOLT CIRCUIT: FURNISH AND INSTALL ONE 20 amp 120 volt circuit as shown.
 - 120 VOLT CIRCUIT: FURNISH AND INSTALL THREE 20 AMP, 120 VOLT CIRCUITS AS SHOWN.
 - ICE MACHINE: FURNISH AND INSTALL A 208 volt 20 amp, 1 phase circuit with three #12W in 1/2" conduit to feed new ice machine.
 - 120 VOLT 1G CIRCUIT: FURNISH AND INSTALL A 20 AMP, 120 VOLT 1G CIRCUIT AS SHOWN.
 - SNACK BAR PANELS: FURNISH AND INSTALL A 208 VOLT, 60 AMP, 3 PHASE CIRCUIT WITH FOUR #4W & ONE #10GR. IN 1 - 1 1/4" CONDUIT TO FEED SNACK BAR PANEL.
 - IRC CABLE: IRC cable will be furnished by Wal-Mart and installed by contractor.
 - 277 VOLT CIRCUIT: FURNISH AND INSTALL ONE 20 amp 277 volt circuit as shown.
 - FURNISH AND INSTALL ONE 20 AMP 120 VOLT CIRCUIT TO THE NEW EXHAUST HOOD.

The receptacles feeding the equipment under the hood are fed from the prewired panel furnished with the snackbar counter. Determine which breakers serve this equipment and replace with new 120V, 20A single pole shunt trip breakers.

Connect shunt trip mechanisms to the shutdown contacts in the exhaust hood control panel.

Initiation of the hood fire suppression system shall shutdown power to the cooking equipment under the hood.

HARRISON FRENCH
ARCHITECTURE
502 S.W. A Street
Bentonville, Arkansas 72712
Telephone 501/273-7780

WAL-MART
SNACK BAR
REMODEL

STORE #1416
NAPOLEON,
OHIO

WAL-MART STORES INC.
STORE PLANNING DEPT. 8085
702 SW 8TH
BENTONVILLE, AR 72716

Sheet Contents:
SNACK BAR
MECHANICAL PLAN

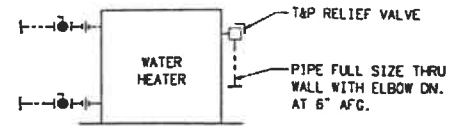
Drawn By: SKV
Checked By: SAG
Revisions:

Paul C. Parks Engineering
BENCHMARK GROUP (501)838-5004
121 W. WALNUT ROGERS, ARKANSAS, 72756
JOB NO.: 97-3392 DESIGNED BY: SKV

STATE OF OHIO
PAUL C. PARKS
E61152
REGISTERED PROFESSIONAL ENGINEER

All questions from General Contractors related to the bidding of this project or the work herein shall be directed to:
WAL-MART STORES INC.
STORE PLANNING DEPT. 8085
702 SW 8TH
BENTONVILLE, AR 72716
TELEPHONE: (501) 273-4999/277-2418

Project Number: W7048
Date: 05-08-97
Sheet: -OF-SHEETS



4 WATER HEATER DETAIL
N.T.S.

ELECTRIC WATER HEATER SCHEDULE

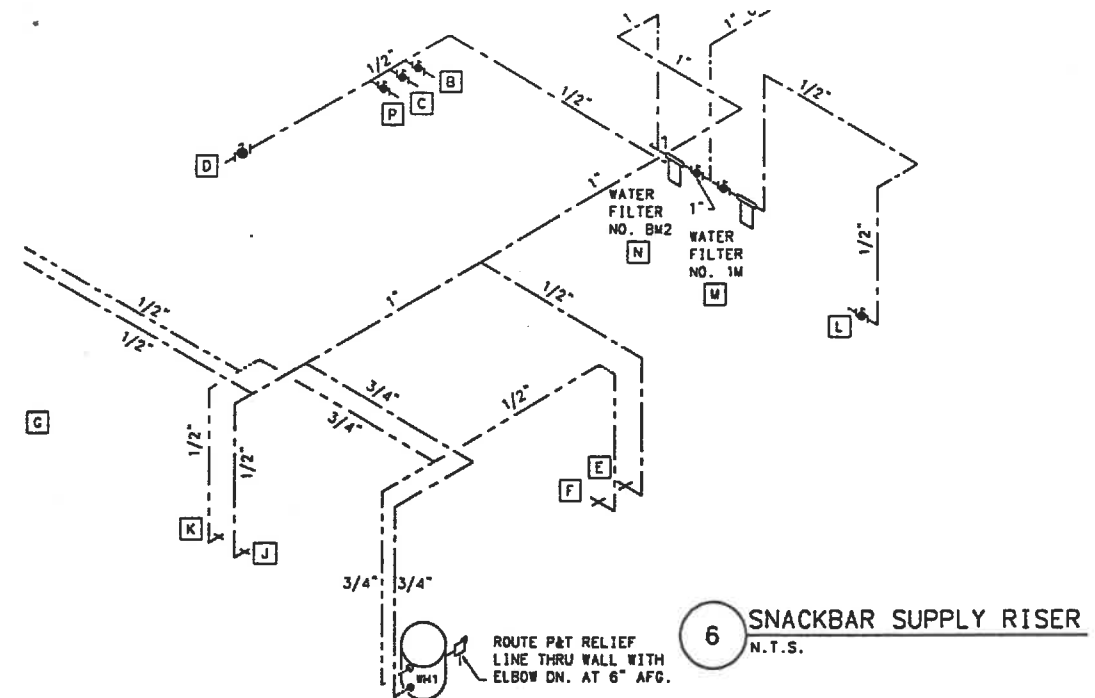
MARK	AREA SERVED	MANUFACTURER MODEL NO. CERTIFICATION	TANK SIZE	V/PH/Hz KW	NOTES
WH1	SNACKBAR	A.O. SMITH ELSF-30 UL, ASHRAE	30 GAL	208/1/60 4.5 KW	A, B
NOTES: A. DOUBLE ELEMENT, NON-SIMULTANEOUS B. UNDERCOUNTER					

GRILLE AND DIFFUSER SCHEDULE
(THE FOLLOWING APPLY ONLY WHEN USED ON DRAWINGS)

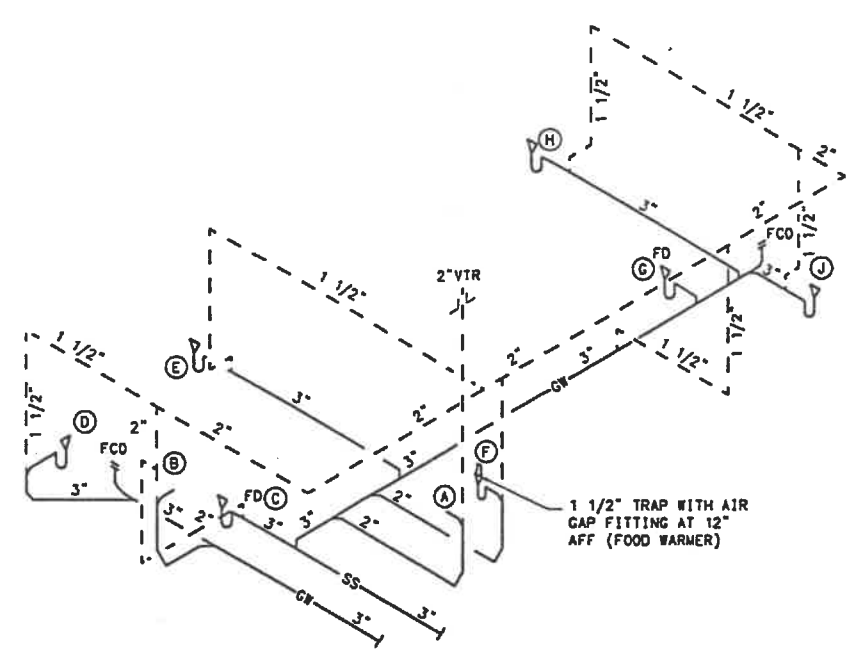
MARK	SERVICE	MANUFACTURER MODEL ACCESSORIES	MOUNTING TYPE	FRAME TYPE STYLE NOTES
CD3	SUPPLY AIR	TITUS TMS 24" x 24"	CEILING DIFFUSER	LAY-IN CURVED CONE NOTES C, D, E
NOTES: A. PROVIDE ACCESS PANEL TO VOLUME CONTROL DAMPER IF OTHER THAN LAY-IN CEILING. B. FACE SIZE SHALL BE AS SHOWN ON DRAWINGS. C. PATTERN SHALL BE 4 WAY UNLESS SHOWN OTHERWISE ON DRAWINGS. D. USE ROUND NECK SIZE SAME AS BRANCH DUCT UNLESS NOTED OTHERWISE. E. BAKED ENVIRO-THERM #26 WHITE. F. PROVIDE OPPOSED BLADE DAMPER WHERE INDICATED W/ OBD.				

FLOOR DRAIN SCHEDULE
(THE FOLLOWING APPLY ONLY WHEN USED ON DRAWINGS)

MARK	DRAIN DESCRIPTION MANUFACTURER MODEL NO.
FD	3" LIGHT DUTY GENERAL USE W/5"DIA. NICKEL BRONZE GRATE WADE W-1103-STD5-1, J.R. SMITH 2005-AS-NB, JOSAM 30003-SA-1 ZURN ZN-415-5B, ANCON FD-103-C-A5-1

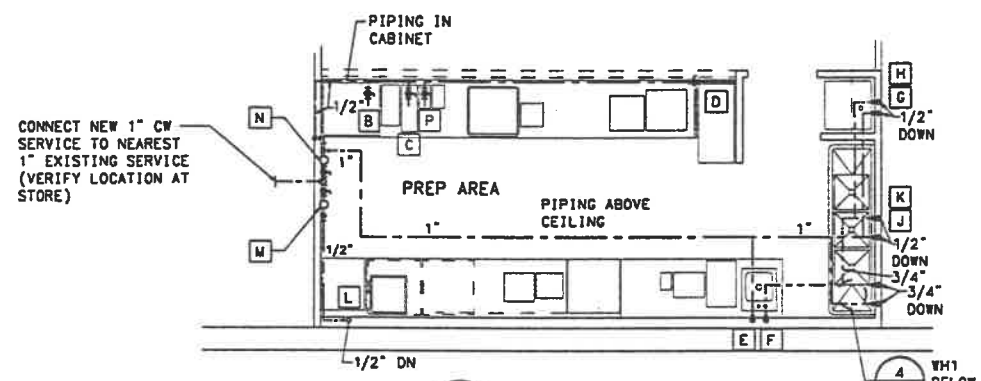


6 SNACKBAR SUPPLY RISER
N.T.S.



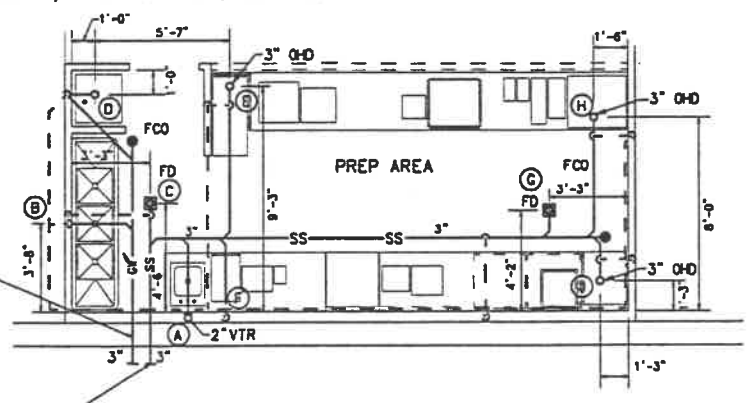
5 SNACKBAR DWV RISER
N.T.S.

NOTE: WATER FILTERS (BM2 & 1M) SUPPLIED BY WAL-MART AND INSTALLED BY CONTRACTOR AFTER CABINETRY HAS BEEN INSTALLED. COORDINATE WITH VENDOR.
NOTE: LEAVE A MIN. OF 8" PIPE STUB-OUT AT EACH ROUGH-IN.



3 PLUMBING PLAN
SCALE 1/4" = 1'-0"

- B SOFT DRINK MACHINE - 1/2" C.W. 10" AFF
- C COFFEE MAKER - 1/4" C.W. MIN. 8" AFF, MAX. 10" AFF
- D ICEE MACHINE - 1/2" C.W. MIN. 8" AFF, MAX. 10" AFF
- E HAND SINK - 1/2" C.W. 10" AFF
- F HAND SINK - 1/2" H.W. 10" AFF
- G MOP SINK - 1/2" C.W. 36" AFF
- H MOP SINK - 1/2" H.W. 36" AFF
- J TRIPLE SINK - 1/2" C.W. 10" AFF
- K TRIPLE SINK - 1/2" H.W. 10" AFF
- L ICE MACHINE - 1/2" C.W. 75" AFF
- M FILTER (ICE MAKER) - 1/2" C.W. 60" AFF
- N FILTER - 3/4" C.W. 60" AFF
- P CAPPUCCINO - 1/4" C.W. MIN. 8" AFF, MAX. 10" AFF

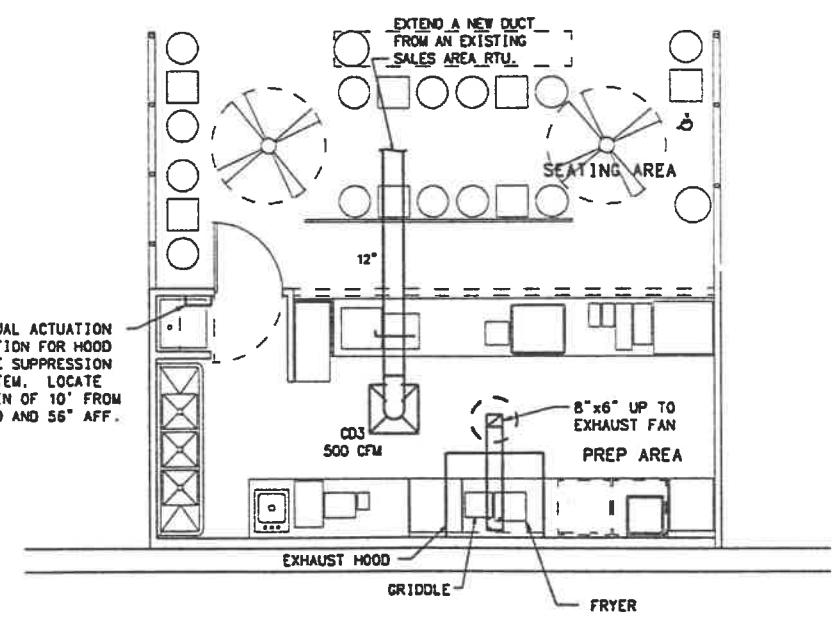


2 WASTE & VENT PLAN
SCALE 1/4" = 1'-0"

ROUTE NEW 3" GREASE WASTE TO EXISTING GREASE INTERCEPTOR (CONTRACTOR TO VERIFY IF STORE HAS EXISTING AND LOCATION). IF STORE DOES NOT HAVE INTERCEPTOR OR IF EXISTING INTERCEPTOR IS NOT ACCESSIBLE, CONTRACTOR TO PROVIDE NEW INTERCEPTOR LOCATED OUTSIDE OF BLDG. IN SIDEWALK AREA. INTERCEPTOR TO BE SIMILAR TO ZURN MODEL 1170R, SIZE 600, 25 GPM, 50H GREASE CAPACITY. INSTALL PER MANUFACTURER'S INSTRUCTIONS. NEW INTERCEPTOR TO DISCHARGE INTO EXISTING SAN. SEWER.

ROUTE NEW 3" SANITARY SEWER AS SHOWN AND EXTEND TO DISCHARGE PIPING OF EXISTING GREASE INTERCEPTOR. IF NEW INTERCEPTOR IS PROVIDED, CONNECT TO NEW DISCHARGE PIPING TO EXISTING SANITARY SEWER. VERIFY EXACT LOCATION.

- A 2" ST. STL. LINE DRAIN - 12" AFF - HAND SINK
 - B 2" ST. STL. LINE DRAIN - 12" AFF - TRIPLE SINK
 - C FLOOR WASTE DRAIN
 - D MOP SINK DRAIN
 - E ICEE MACH. OPEN HUB DRAIN
 - F 2" ST. STL. LINE DRAIN - 12" AFF - FOOD WARMER
 - G FLOOR WASTE DRAIN
 - H ICE/BEV. DISP. OPEN HUB DRAIN
 - J ICE MACHINE OPEN HUB DRAIN
- NOTE: INSTALL OPEN HUB DRAINS (OHD) FLUSH WITH FINISHED FLOOR.



1 HVAC PLAN
SCALE 1/4" = 1'-0"

Paul C. Parks Engineering
BENCHMARK GROUP (501) 638-5004
121 W. WALNUT ROGERS, ARKANSAS, 72756
JOB NO.: 97-3392 DESIGNED BY: LET

STATE OF OHIO
PAUL C. PARKS
E-51152
REGISTERED PROFESSIONAL ENGINEER

WAL-MART
SNACK BAR
REMODEL

STORE #1416
NAPOLEON,
OHIO

WAL-MART STORES INC.
STORE PLANNING DEPT. 8085
702 SW 8TH
BENTONVILLE, AR 72716

Sheet Contents:
SNACK BAR
MECHANICAL PLAN

Drawn By: LET
Checked By: ...
Revisions:

Project Number: 97048
Date: 05-08-97
Sheet: OF SHEETS

M1

WAL*MART
SNACK BAR
REMODEL

STORE # **1416**
NAPOLEON,
OHIO

WAL-MART STORES INC.
STORE PLANNING DEPT. 8085
702 SW 8TH
BENTONVILLE, AR 72716

Sheet Contents:
SNACK BAR
HOOD PLAN

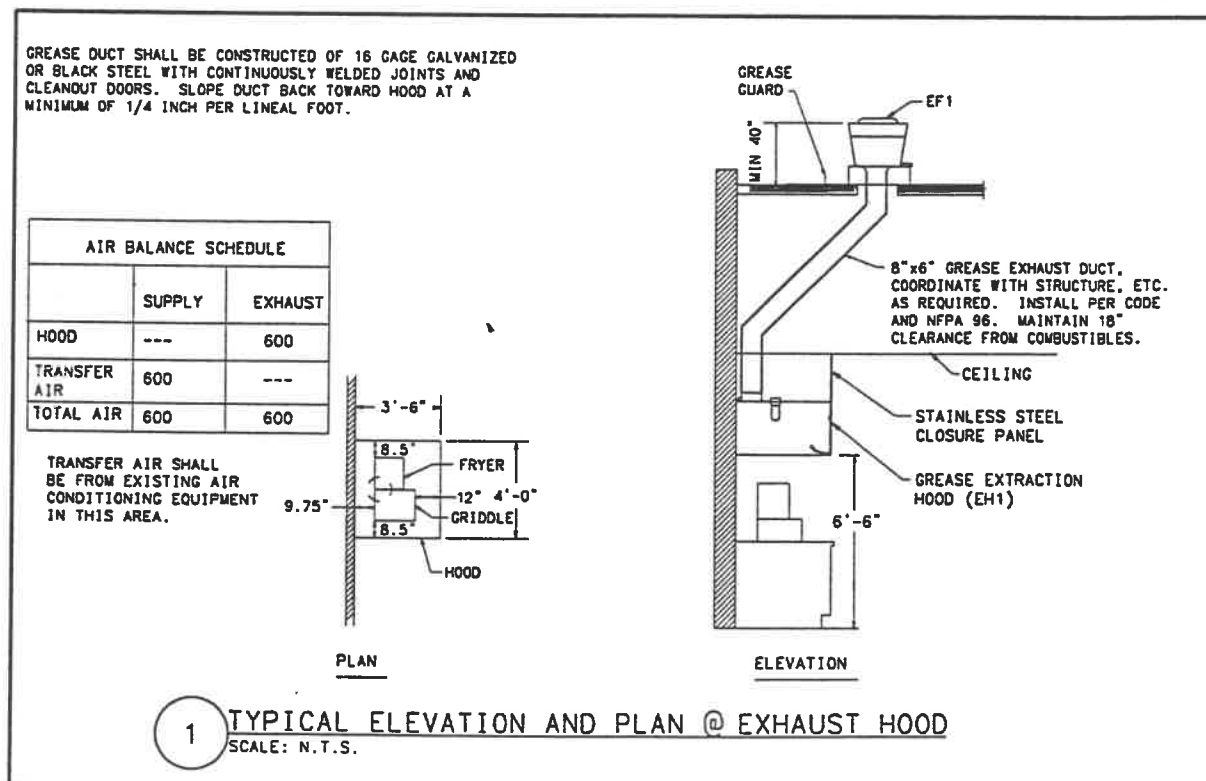
Drawn By: LET
Checked By: ...
Revisions:

All questions from General Contractors
related to the drawing of this project
or the work thereon shall be directed
to:
WAL-MART STORES INC.
STORE PLANNING DEPT. 8085
702 SW 8TH
BENTONVILLE, AR 72716
TELEPHONE: (501) 273-4906/277-2416

Project Number: 87048
Date: 05-08-97
Sheet: OF SHEETS

MH 1

Copyright ©

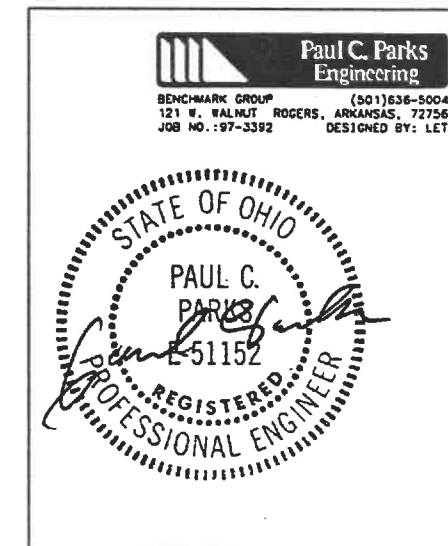


SNACKBAR EXHAUST HOOD SCHEDULE						
MARK	AREA SERVED	MANUFACTURER MODEL MOUNTING	SIZE			NOTES
			LENGTH	WIDTH	HEIGHT	
EH1	SNACK BAR	CAPTIVE-AIRE 332 AND WALL MOUNT	4'-0"	3'-3"	2'-0"	A,B,C

NOTES:
A. EXHAUST HOOD FURNISHED BY WAL-MART, INSTALLED BY CONTRACTOR. CONTACT LADONNA HENDERSON, RUBY BELL CORP., (417) 486-3141, FOR ORDERING INFORMATION.
B. HOOD PROVIDED WITH INTEGRAL DRIP TRAY, LIGHTS, STAINLESS STEE U.L. LISTED GREASE FILTERS.
C. MOUNT BOTTOM OF HOOD AT 6'-6" AFF.
D. FIRE PROTECTION SYSTEM FOR HOOD SHALL BE ANSUL WET CHEMICAL TYPE FIRE EXTINGUISHING SYSTEM IN COMPLETE CONFORMANCE WITH NFPA 96.

SNACKBAR EXHAUST FAN SCHEDULE						
MARK	AREA SERVED	MANUFACTURER MODEL MOUNTING	CFM ESP BLADE TYPE	V/PH/MZ HP OR W RPM/DRIVE	NOTES	

NOTES:
A. EXHAUST FAN AND CURB FURNISHED BY WAL-MART, INSTALLED BY CONTRACTOR. CONTACT LADONNA HENDERSON, RUBY BELL CORP., (417) 486-3141, FOR ORDERING INFORMATION.
B. EXHAUST FAN SHALL BE UP-BLAST, UL APPROVED FOR GREASE EXHAUST.
C. FAN EXHAUST DISCHARGE SHALL BE A MINIMUM OF 40" ABOVE ROOF.



HOOD INFORMATION TABLE

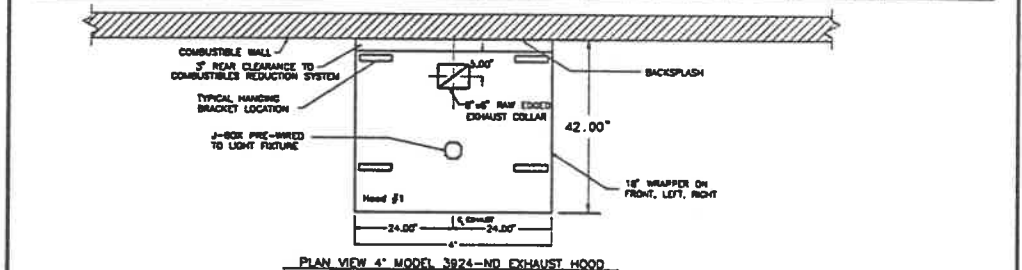
HOOD NO.	MODEL	LENGTH	MAX. COOKING TEMP.	AIR REQUIREMENTS						HOOD CONFIGURATION						
				EXHAUST RISER	SUPPLY RISER	TOTAL EXH. CFM	TOTAL SUPP. CFM	HOOD CONST.	END TO END	BACK TO BACK						
1	3924-ND	4' 0"	600 DEG.	1	1	600	0.250	600	-	-	-	-	-	-	-	TYPE 430 SS WHERE EXPOSED

HOOD ACCESSORIES TABLE

HOOD NO.	BACK RETURN	STAND-OFF	WRAPPER	BACKSLASH	END PANELS				FINISHED BACK	FINISHED BACK LENGTH
					WIDTH	LENGTH	TOP WIDTH	BOTTOM WIDTH		
1	-	-	-	-	-	-	-	-	-	-

HOOD INFORMATION TABLE

HOOD NO.	FIRE CABINET	FILTERS			LIGHTS			FIRE SYSTEM			ELECTRICAL INFORMATION			HOOD WEIGHT		
		QTY.	HT.	LEN.	QTY.	TYPE	WIRE GAUGE	TYPE	SIZE (GALLONS)	LOCATION	PRE-WIRE PACKAGE #	LOCATION	# OF SWITCHES		LOCATION	
1	NONE	3	18	18	1	AL BATTLE	1	INCAN.	-	ANSUL	3.0	Wall Mt.	11011000	Wall Mt.	1 LIGHT SV 1/2" SV 1/2" SV 1/2" SV	293 LBS.



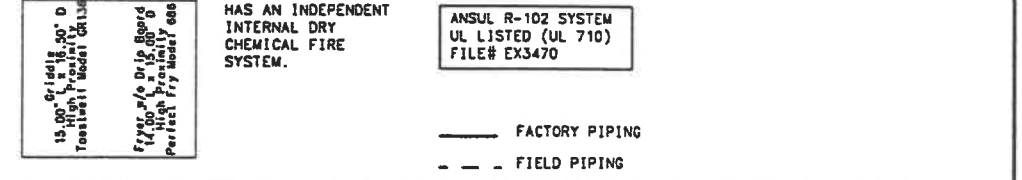
CAPTIVE-AIRE

JOB	WAL-MART SNACK AREA
LOCATION	
DATE	1/7/97
DWG #	WJWDSNK
REV.	B - 2/14/97

DRAWING NUMBER: WJWDSNK.DWG
Job Name: WAL-MART SNACKBAR
Drawn By: JFR
System Size: ANSUL-3.0 Tank System - Total System FP = 6.00
Hood # 1 4' 0" Long x 39" Wide x 24" High
Duct # 1 Size: 8" DIA.

- LEGEND - WALL MOUNTED ANSUL SYSTEM**
- 1 3 GALLON REGULATED RELEASE ASSEMBLY
 - 5 ANSUL-3.0 LIQUID AGENT (3 GAL.) CARTRIDGE (101-20)
 - 7 TEST LINK
 - 10 DOUBLE MICROSWITCH
 - 11 DUCT NOZZLE (56928)
 - 1N NOZZLE ASSEMBLY (56930)
 - 1NS NOZZLE ASSEMBLY (415566)
 - 230 NOZZLE ASSEMBLY (418117)
 - 28 DETECTOR BRACKET
 - 29 LOW TEMP FUSIBLE LINK
 - 30 HIGH TEMP FUSIBLE LINK
 - 34 REMOTE MANUAL PULL STATION

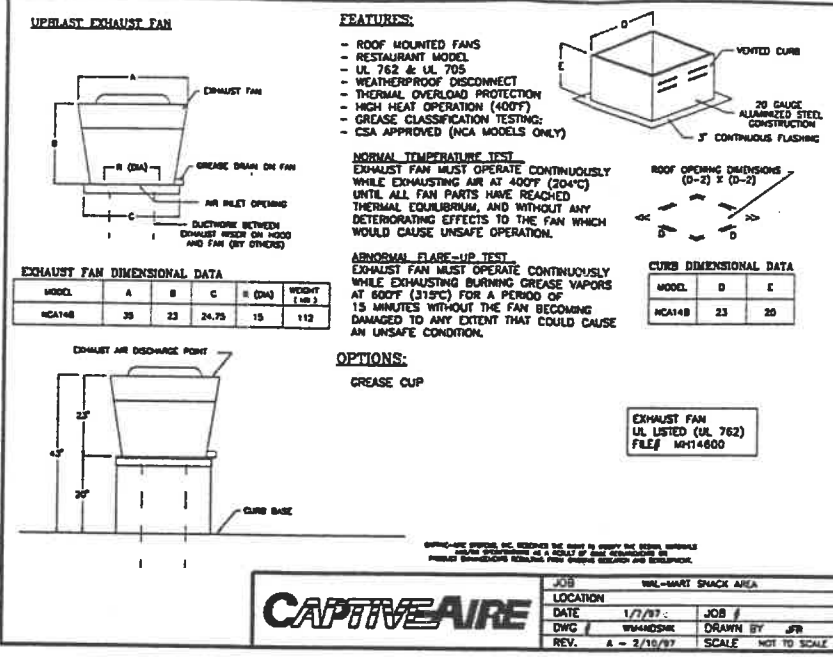
- NOTES**
- RELOCATE NOZZLES IF FLOW PATTERN IS BLOCKED BY SHELVING, SALAMANDERS, ETC.
 - MAXIMUM 9 ELBOWS IN SUPPLY LINE.
 - MINIMUM 72 INCHES OF AGENT LINE FROM TANK TO FIRST NOZZLE.
 - FACTORY PIPING EXTENDS A MAXIMUM OF 6" ABOVE THE TOP OF THE HOOD.
 - APPLIANCE DIMENSIONS LISTED REPRESENT THE COOKING SURFACE SIZE, NOT THE OVERALL APPLIANCE SIZE.
 - THIS FIRE SYSTEM COMPLIES WITH U.L. 300 REQUIREMENTS.
 - ALL SYSTEM PIPING IS SCHEDULE 40 BLACK IRON WITH STAINLESS STEEL SLEEVING AND CHROME PLATED FITTINGS WHERE EXPOSED.
 - ALL EQUIPMENT IS ELECTRIC.
 - ALL FIELD WIRING BY JOBSITE ELECTRICIAN.
 - SHUNT TRIP BREAKER BY JOBSITE ELECTRICIAN.
 - REMOTE MANUAL PULL STATION TO BE LOCATED PER PLANS.



CAPTIVE-AIRE HOODS ARE BUILT IN COMPLIANCE WITH NFPA #96 AND ONE OR MORE OF THE FOLLOWING:
NSF #1362
B.O.C.A. #86-48
I.C.B.O. #4416
S.B.C.C.I. #8675
U.L. CLASSIFICATION #9166
U.L. LISTING (UL 710)
FILE # MH12106

CAPTIVE-AIRE

JOB	WAL-MART SNACK AREA
LOCATION	
DATE	1/7/97
DWG #	WJWDSNK
REV.	B - 2/14/97



CAPTIVE-AIRE

JOB	WAL-MART SNACK AREA
LOCATION	
DATE	1/7/97
DWG #	WJWDSNK
REV.	B - 2/14/97

FEATURES:

- ROOF MOUNTED FANS
- RESTAURANT MODEL
- UL 762 & UL 705
- WEATHERPROOF DISCONNECT
- THERMAL OVERLOAD PROTECTION
- HIGH HEAT OPERATION (400°F)
- GREASE CLASSIFICATION TESTING
- CSA APPROVED (NCA MODELS ONLY)

NORMAL TEMPERATURE TEST:
EXHAUST FAN MUST OPERATE CONTINUOUSLY WHILE EXHAUSTING AIR AT 400°F (204°C) UNTIL ALL FAN PARTS HAVE REACHED THERMAL EQUILIBRIUM, AND WITHOUT ANY DETERIORATING EFFECTS TO THE FAN WHICH WOULD CAUSE UNSAFE OPERATION.

ABNORMAL CLASH-UP TEST:
EXHAUST FAN MUST OPERATE CONTINUOUSLY WHILE EXHAUSTING BURNING GREASE VAPORS AT 600°F (315°C) FOR A PERIOD OF 15 MINUTES WITHOUT THE FAN BECOMING DAMAGED TO ANY EXTENT THAT COULD CAUSE AN UNSAFE CONDITION.

OPTIONS:
GREASE CUP



CAPTIVE-AIRE

JOB	WAL-MART SNACK AREA
LOCATION	
DATE	1/7/97
DWG #	WJWDSNK
REV.	B - 2/14/97

SPECIFICATIONS: ND MODEL

THE MODEL ND IS A CANOPY HOOD WITH OPTIONAL REAR DISCHARGE MAKE-UP AIR THROUGH A REAR PLENUM (NDBR).

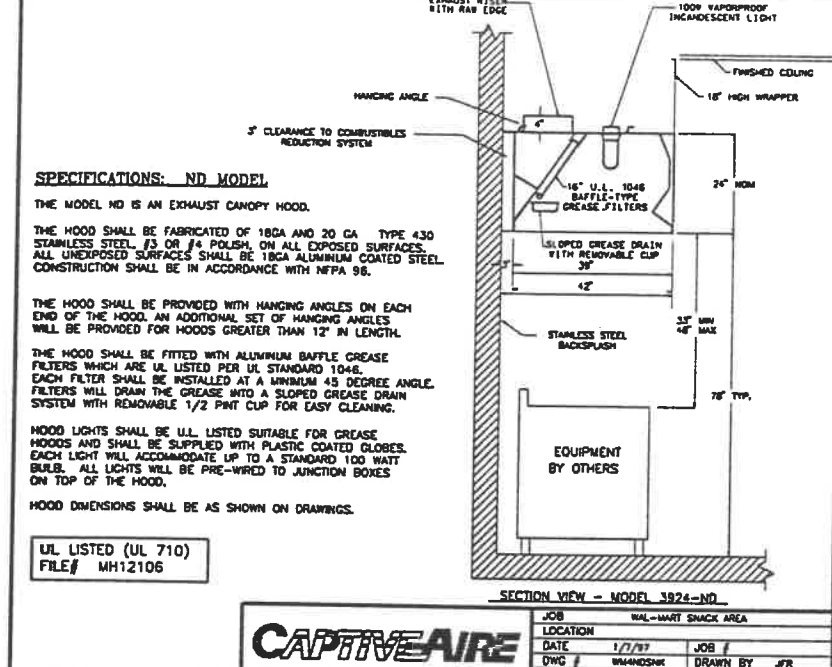
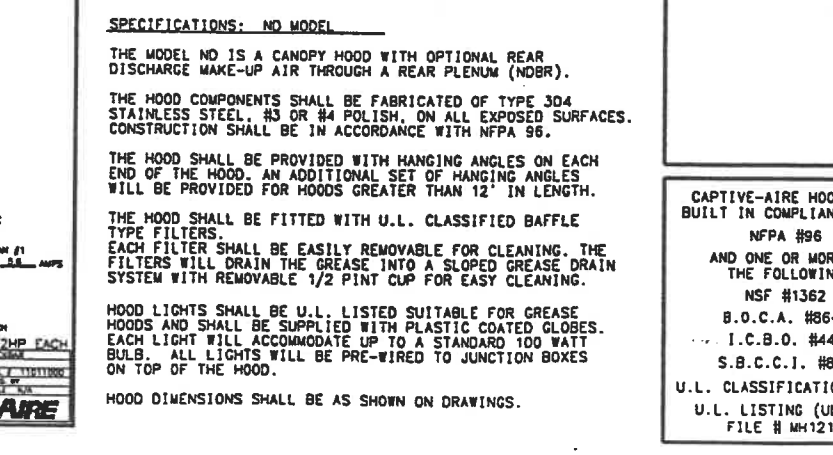
THE HOOD COMPONENTS SHALL BE FABRICATED OF TYPE 304 STAINLESS STEEL, #3 OR #4 POLISH, ON ALL EXPOSED SURFACES. CONSTRUCTION SHALL BE IN ACCORDANCE WITH NFPA 96.

THE HOOD SHALL BE PROVIDED WITH HANGING ANGLES ON EACH END OF THE HOOD. AN ADDITIONAL SET OF HANGING ANGLES WILL BE PROVIDED FOR HOODS GREATER THAN 12' IN LENGTH.

THE HOOD SHALL BE FITTED WITH U.L. CLASSIFIED BAFFLE TYPE FILTERS. EACH FILTER SHALL BE EASILY REMOVABLE FOR CLEANING. THE FILTERS WILL DRAIN THE GREASE INTO A SLOPED GREASE DRAIN SYSTEM WITH REMOVABLE 1/2 PINT CUP FOR EASY CLEANING.

HOOD LIGHTS SHALL BE U.L. LISTED SUITABLE FOR GREASE HOODS AND SHALL BE SUPPLIED WITH PLASTIC COATED GLOBES. EACH LIGHT WILL ACCOMMODATE UP TO A STANDARD 100 WATT BULB. ALL LIGHTS WILL BE PRE-WIRED TO JUNCTION BOXES ON TOP OF THE HOOD.

HOOD DIMENSIONS SHALL BE AS SHOWN ON DRAWINGS.



CAPTIVE-AIRE

JOB	WAL-MART SNACK AREA
LOCATION	
DATE	1/7/97
DWG #	WJWDSNK
REV.	B - 2/14/97

FAN INFORMATION TABLE

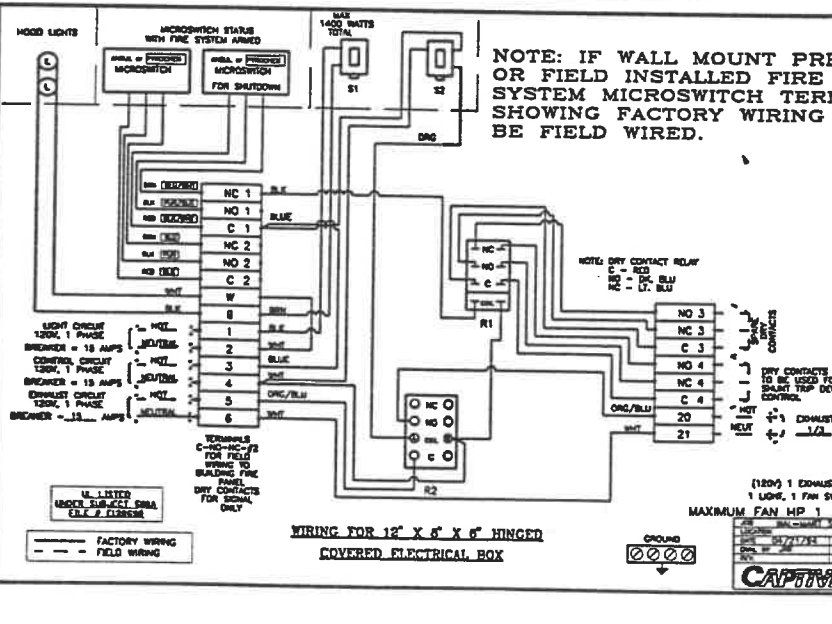
FAN UNIT NO.	FAN UNIT MODEL #	EXHAUST FAN						SUPPLY FAN									
		MODEL	TAG	CFM	S.P.	RPM	H.P.	#	VOLT	BLOWER MODEL/HOUSING MODEL	TAG	CFM	S.P.	RPM	H.P.	#	VOLT
1	HC148BT CF-1	FX148BT	CF-1	600	0.75	882	0.33	1	120	-	-	-	-	-	-	-	-

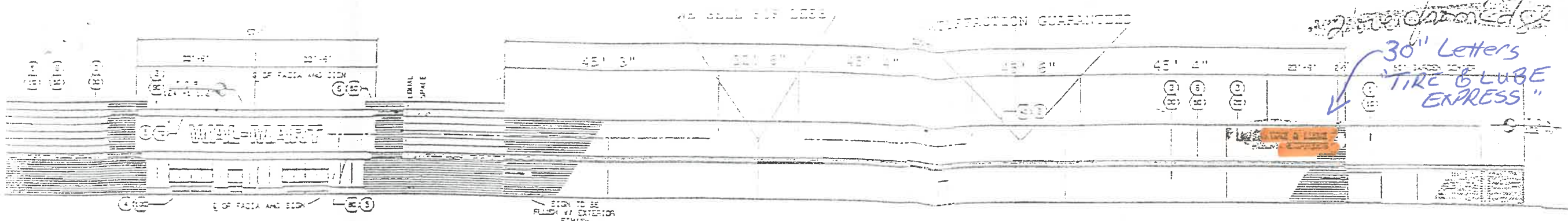
FAN ACCESSORY TABLE

FAN UNIT NO.	FAN UNIT TAG	EXHAUST			SUPPLY		
		GREASE CUP	GRAVITY DAMPER	WALL MOUNT	GRAVITY DAMPER	MOTORIZED DAMPER	WALL MOUNT
1	CF-1	Yes	-	-	-	-	-

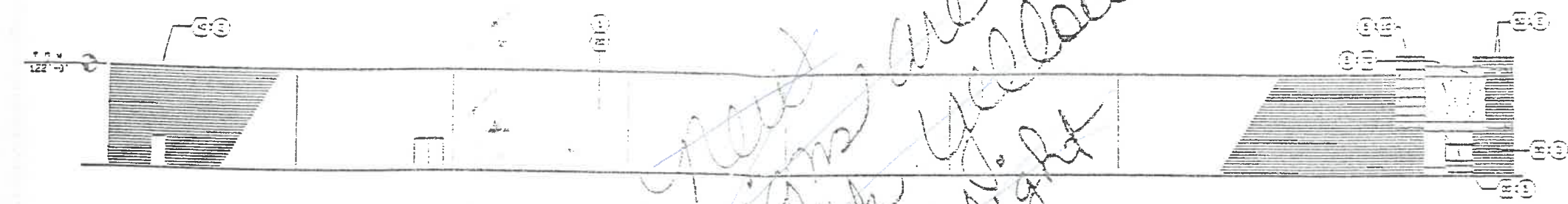
CURB TABLE

CURB NO.	ON FAN	CURB			RIM			TRUNKLINE			EXHAUST ADAPTER			SUPPLY ADAPTER			VENTED CURB	CAPPED CURB	WINGED CURB	WEL CURB
		WIDTH	LENGTH	DOE. SUP.	PITCH	WIDTH	LENGTH	HEIGHT	WIDTH	LENGTH	HEIGHT	FROM	TO	HEIGHT	FROM	TO				
1	#1	23.00"	23.00"	30.000"	-	-	-	-	-	-	-	-	-	-	-	-	-	-	-	-

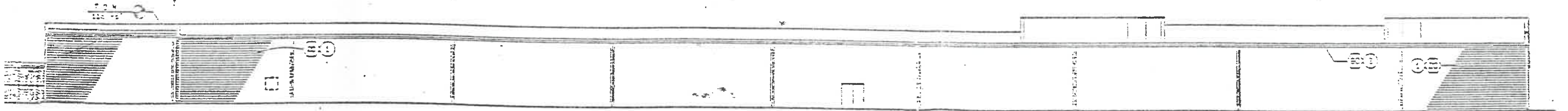




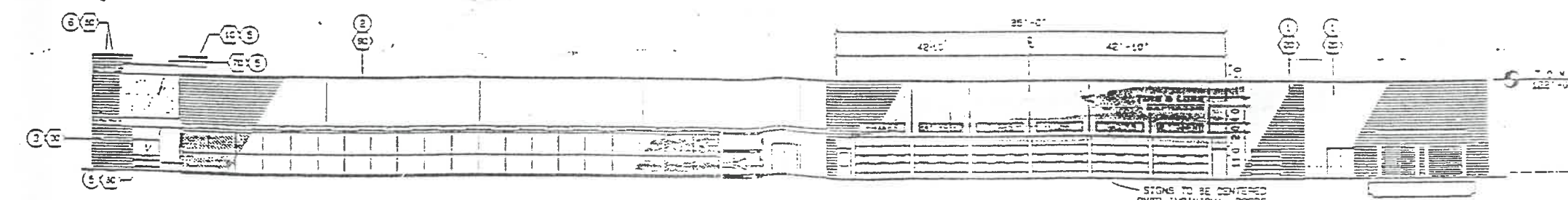
4 FRONT ELEVATION
1/32" = 1'-0" REF: 01-A1



3 LEFT ELEVATION
1/32" = 1'-0" REF: 01-A1



2 REAR ELEVATION
1/32" = 1'-0" REF: 01-A1



1 RIGHT ELEVATION
1/32" = 1'-0" REF: 01-A1

30" Letters
"TIRE & LUBE
EXPRESS"

After

COLOR SCHEDULE

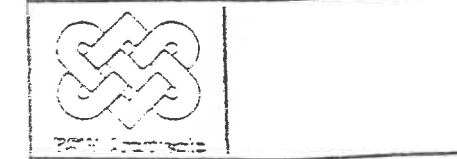
(1)	PRIMER "SARCO GREY" 44-17N "SARCO GREY" 44-17N "SARCO GREY" 44-17N	ACRYLIC LATEX MASONRY COATING
(2)	PRIMER "SARCO GREY" 44-17N "SARCO GREY" 44-17N "SARCO GREY" 44-17N	MASONRY COATING
(3)	PRIMER "SARCO GREY" 44-17N "SARCO GREY" 44-17N "SARCO GREY" 44-17N	MASONRY COATING
(4)	MATCH PERVIN WILLIAMS BY 204	ALUMINUM SEMI-GLOSS
(5)	MATCH PERVIN WILLIAMS BY 204	ACRYLIC LATEX OR MASONRY COATING
(6)	MATCH PERVIN WILLIAMS BY 204	ALUMINUM SEMI-GLOSS
(7)	MATCH PERVIN WILLIAMS BY 204	ALUMINUM SEMI-GLOSS
(8)	MATCH PERVIN WILLIAMS BY 204	ALUMINUM SEMI-GLOSS
(9)	MATCH PERVIN WILLIAMS BY 204	ALUMINUM SEMI-GLOSS
(10)	BLACK ANODIZED ALUMINUM	

EXTERIOR COLOR NOTES

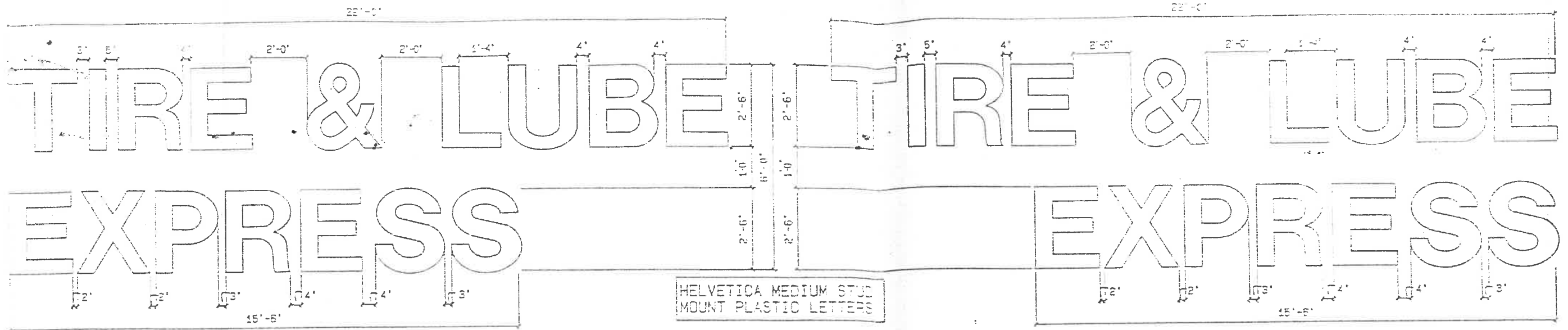
1. DOW, GUTTERS, DOWNSPOUTS, EXPOSED METAL FLASHINGS, HOLLOW METAL DOORS, AND RAILINGS TO MATCH BUILDING COLOR.
2. METAL CANOPY ROOF IS FACTORY FINISHED WHITE ON TOP AND UNDERNEATH.
3. STEEL CANOPY BUTTER-BEAM, STEEL COLUMNS AND SHEET METAL COLUMN CAPS TO MATCH BY 22-24.
4. COPING & TOP OF WALL TO BE "SARCO GREY".

PROTO LR-110-GR-AR
PROTO LL-110-GR-AR SIMILAR

WAL-MART



20th Anniversary



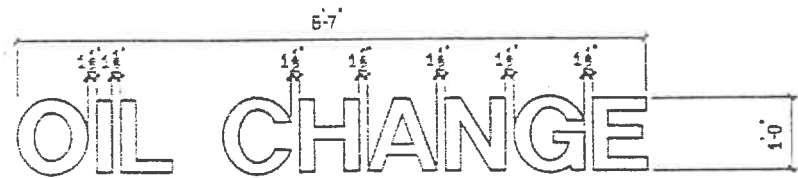
LEFT SIDE TBO STOREFRONT

64 STUDS

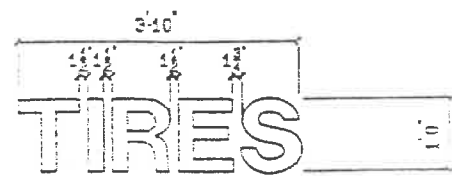
RIGHT SIDE TBO STOREFRONT

3 BLDG. ELEV. SPACING DIMENSIONS 132 4
NOT TO SCALE - PATTERN PROVIDED

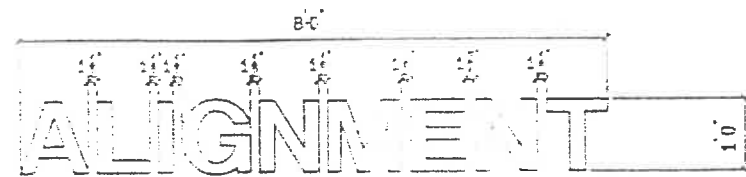
ALL SIGNS ARE HELVETICA MEDIUM STUD MOUNTED PLASTIC LETTERS



40 STUDS 9 4

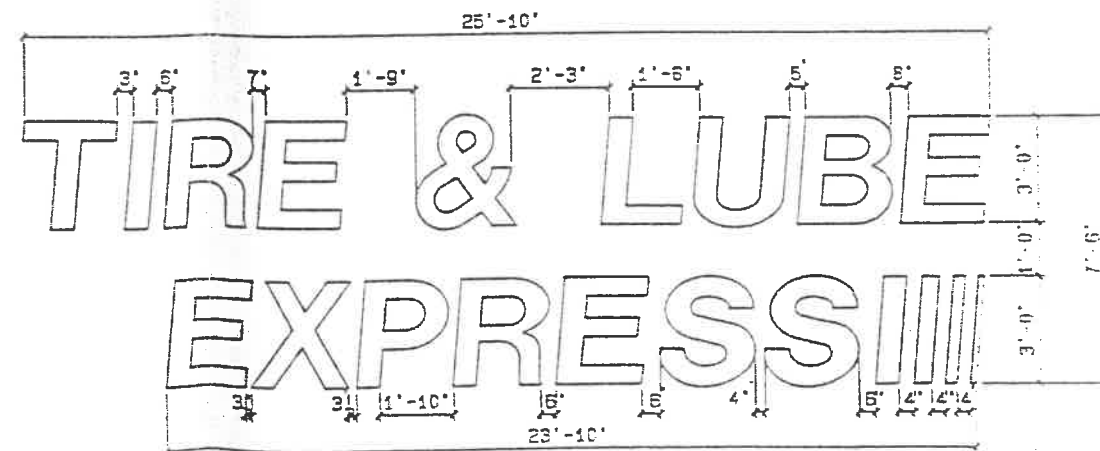


20 STUDS 4 4




40 STUDS 8 4

2 TBO SIGNAGE
NOT TO SCALE



33 STUDS

1 TBO FRONT ELEV. SPACING DIMENSIONS 18 1 4
NOT TO SCALE

SIGNAGE	
WAL★MART	
	
9/16/92	
SGN 6	